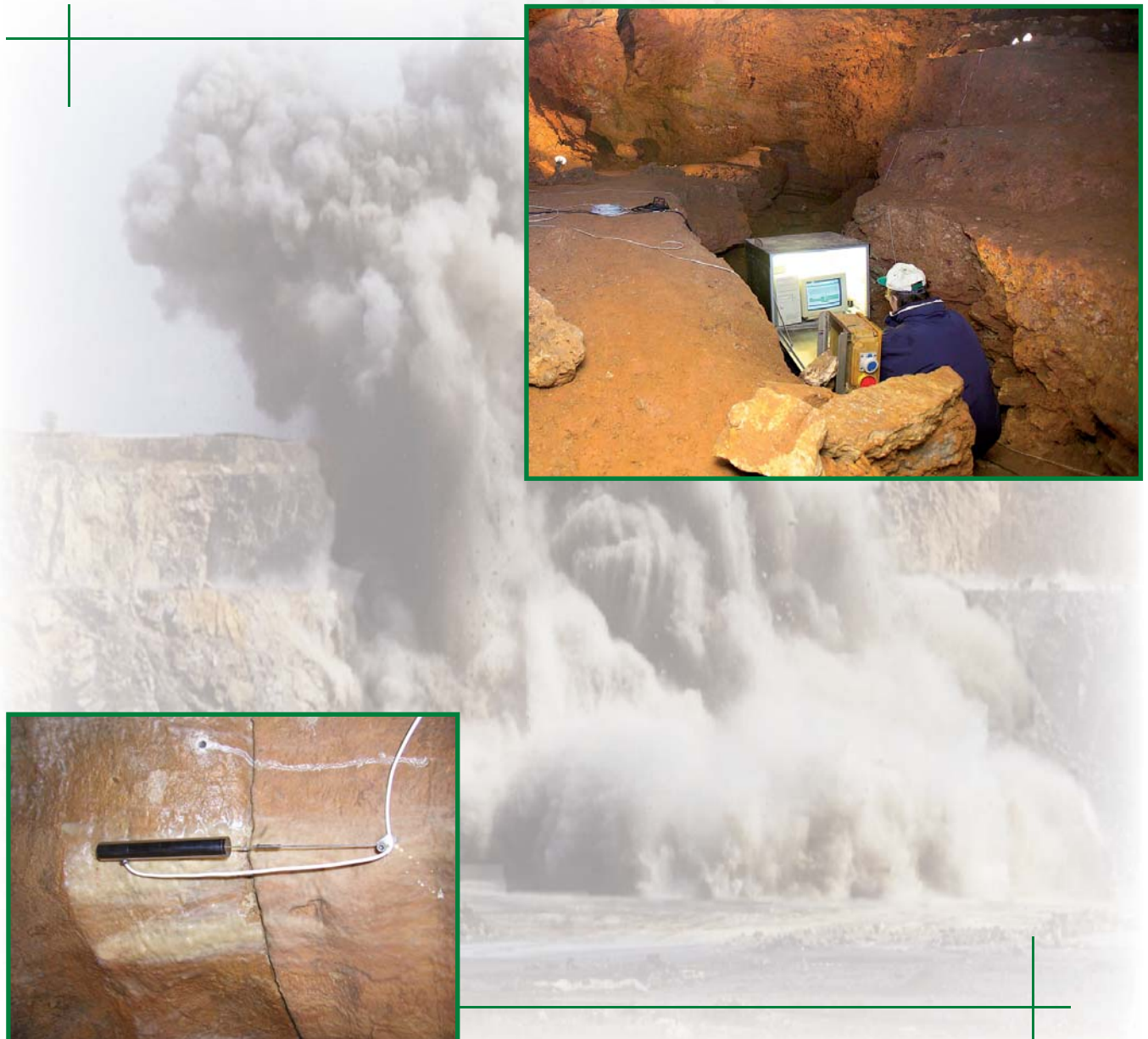
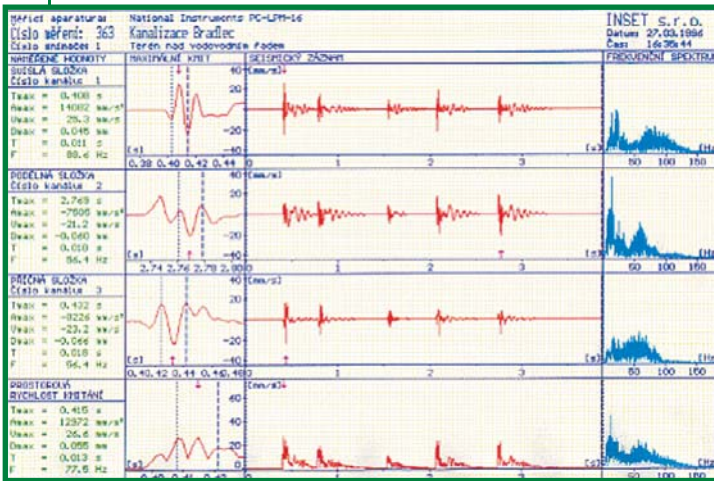


Blasting work and monitoring of its impact on the surroundings

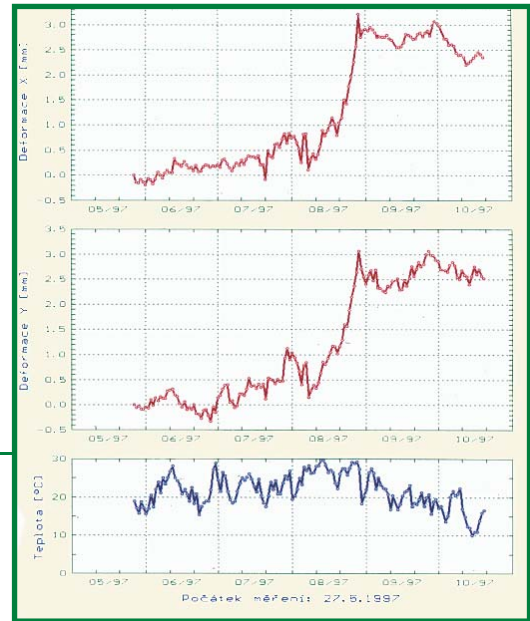
- projects for blasting work and control plans
- management of the technological performance of blasting work
- measurement of the seismic effects of blasting work, assessing the impact of blasting work on buildings and natural objects
- photographic and video documentation of objects in the blast impact area before construction work begins, photographic and video documentation after completing the work
- safety measurements during the blasting work



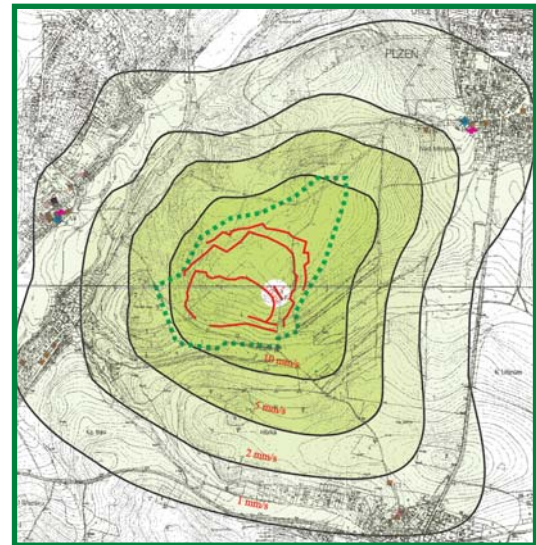
- measurement of stray currents from the point of view of electrical detonation safety
- micro-regionalization of the territory affected by vibrations from quarry blasting using complex geophysical methods
- theoretical dynamic calculations with experimental verification using vibration exciters



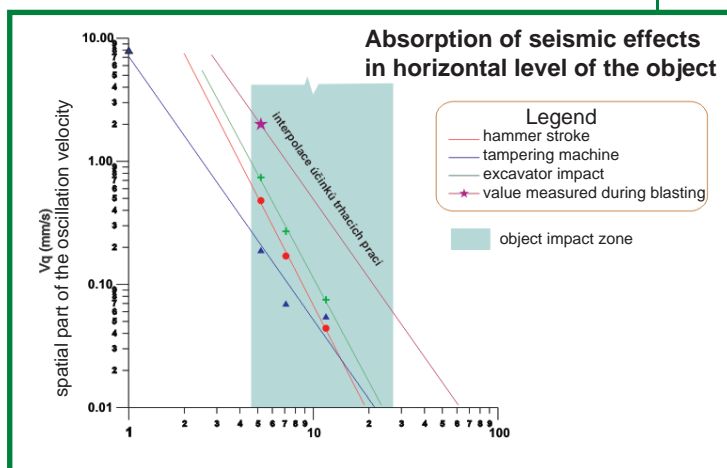
seismogram from timed blasting during the driving of shafts with evaluation



development of building deformation in the zone of seismic load



isoline maps – velocity of oscillations from surface measurements of the seismic effects of bench blasting



energy absorption of seismic effects